

A tropical beach scene with lush green palm trees in the background and a sandy beach in the foreground. Two people are walking on the beach. The text is overlaid on the image.

# BEACHES

---

## Summer Reading

---

### *flip flops*

---

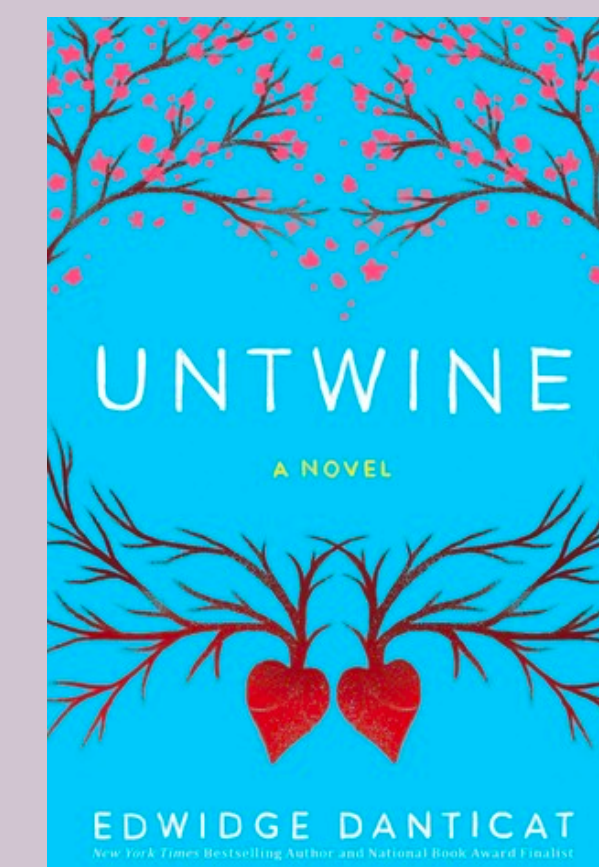
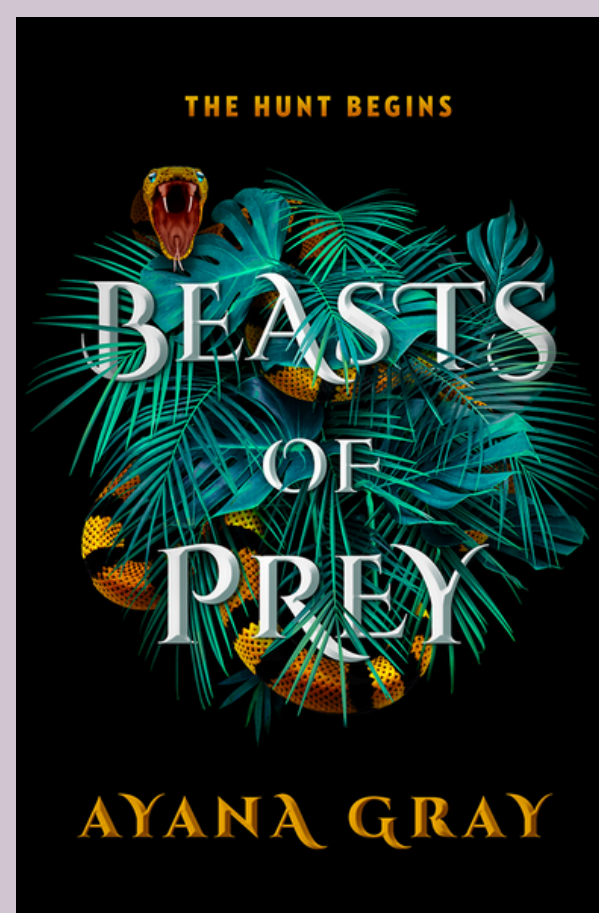
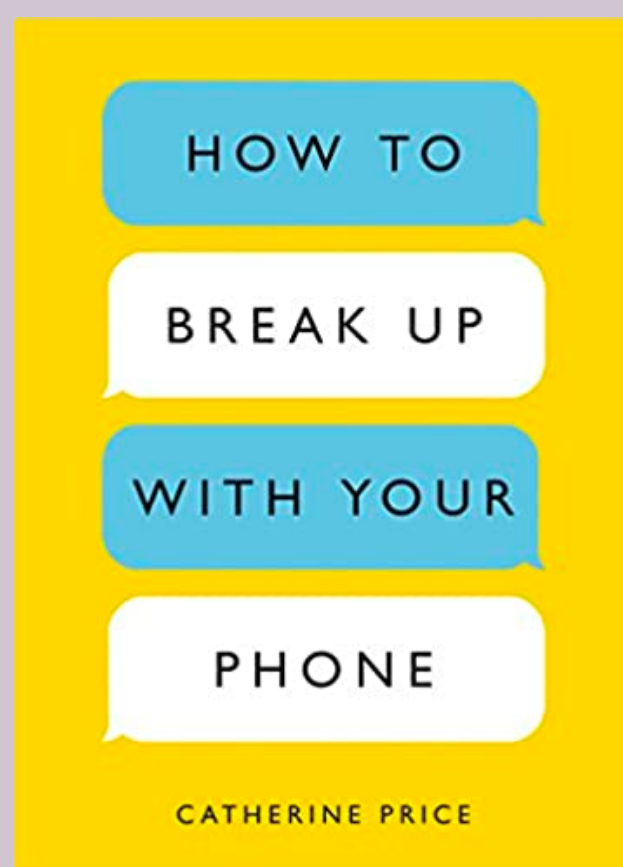
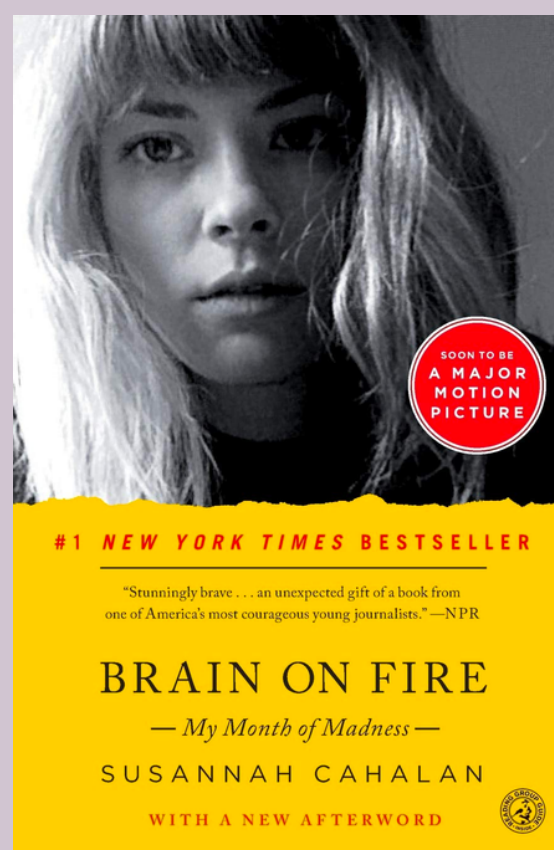
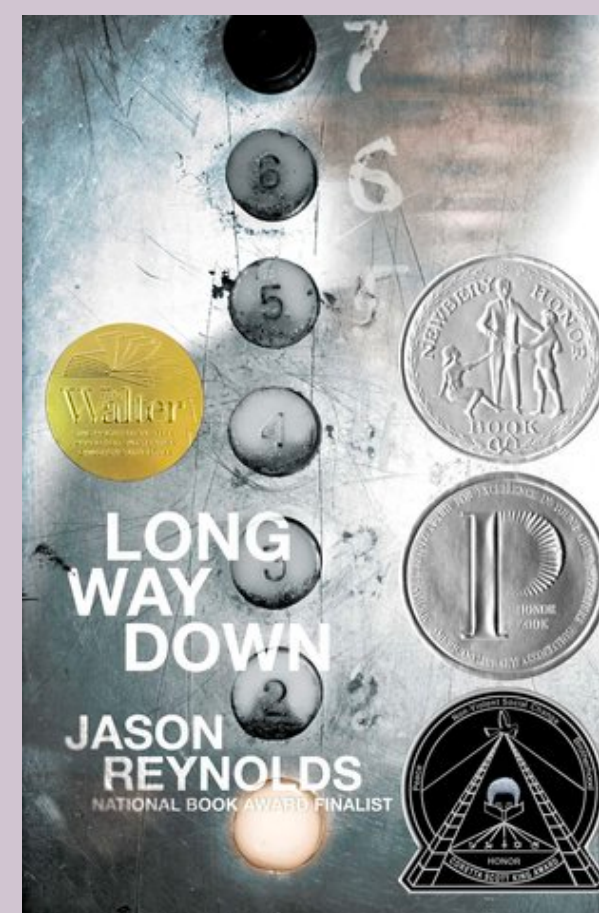
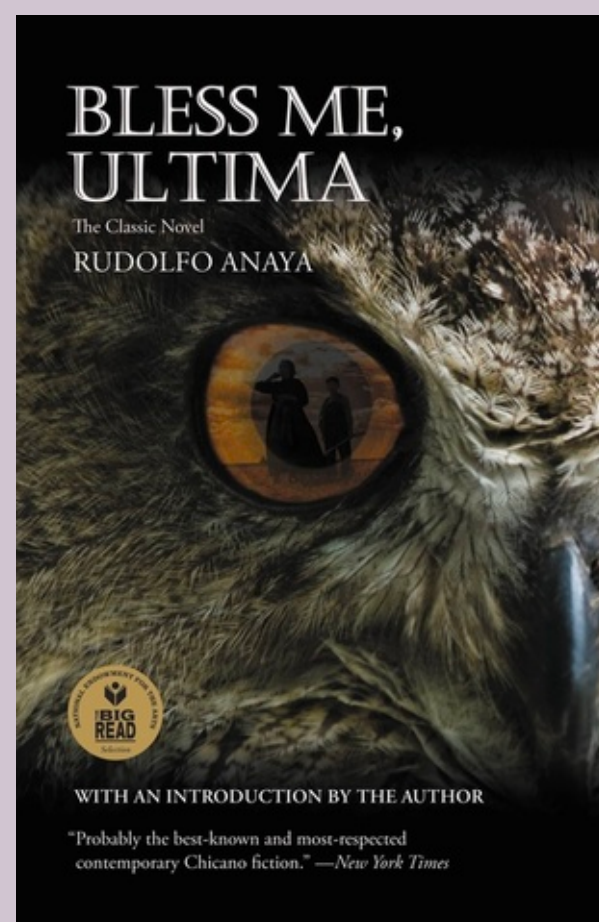
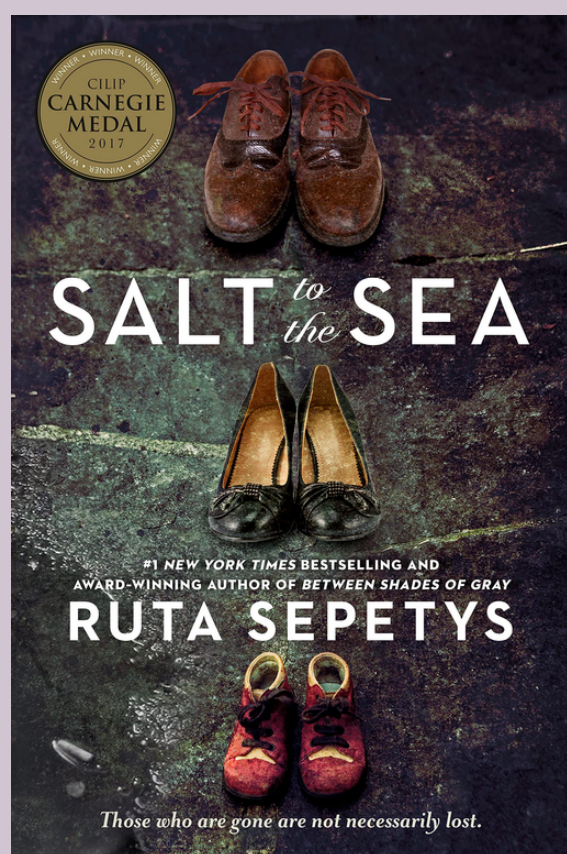
# LEMONADE

English 1  
Summer Reading  
2022/2023



# CLICK ON THE BOOK JACKET

to learn more





**Dear Students and Families,**

**Welcome Chaps! We are so looking forward to meeting you all and getting you acquainted with your WHS community! When we return, students will meet in "book clubs" with other students who share their reading interests. Students should come in August ready to discuss their chosen novel with classmates and analyze the piece through various assignments.**

**Students should purchase a copy of the book they select and finish reading this book by the first day of school in August. All assignments related to summer reading will be given after students begin class in August.**

**We encourage families to engage with their kids by reading and discussing their summer book selection and other texts throughout the year. We look forward to building our Chap community with all of you!**

**If you have questions, please reach out to us!**



**Meredith Huebner  
mhuebner@eanesisd.net**

